

S2

CARPET POLES COIL BOOMS

Carpet Poles

Carpet poles with small diameters made of solid material are used for handling carpet rolls. Two different materials are processed here (42CrMo4 or 30CrNiMo8) in order to obtain equal load capacities with different diameters. When choosing a carpet pole, it should be kept in mind that the deflection will be greater if the carpet pole is made thinner.

We recommend a carpet pole length of 3000 mm for rolls of 4000 mm length. For rolls of 5000 m length, the carpet pole should be at least 3500 mm long.

As a special design, carpet poles are also available with pockets to be slipped onto forks.

Coil Booms

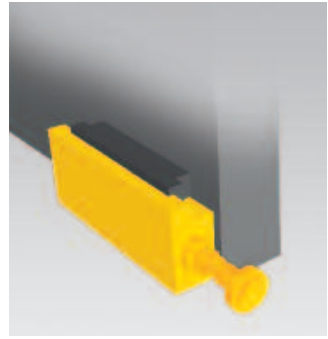
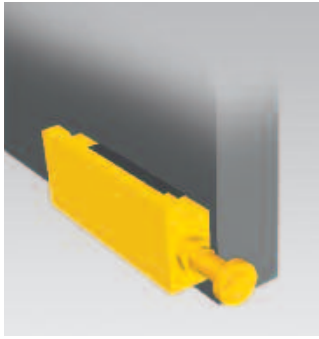
Coil booms are used for handling wire or steel coils, tubes or goods of a similar geometry. In general, coil booms are made of tube material. Depending on the load capacity, diameter and load these attachments can also be made of solid material. Conical or square shapes are also possible.

There are several types of coating for the protection of the transported goods available.



Quick-Coupling Hooks

At a surcharge, we can also provide the lower hooks as QD hooks to enable quick mounting without the use of tools.



Carpet Poles/ Coil Booms, Slip-On Type

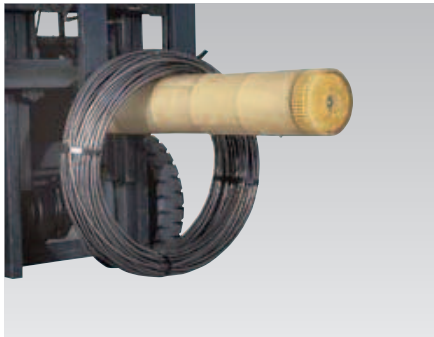
For an occasional transportation of rolls the conversion to boom handling is too time-consuming so that it is advisable to use a slip-on version.



Protective Modules

(Slip-on type)

These modules provide optimal protection for delicate round loads. They are extremely wear resistant, highly slip resistant and easy to replace. Simply slide onto the existing boom and secure with the end cap.

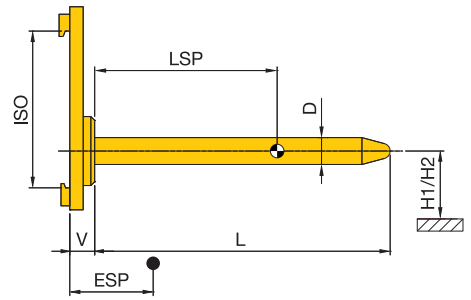


Coil Shoes

The radius of the supporting surface is precisely adapted to the coil inner diameter; material damage is thus reliably prevented. Due to the high friction of the coating the coil rests securely, slipping off is almost impossible. The chamfered tip enters easily into the coil.



Carpet Poles



Material 42CrMo4

| Model | Load capacity kg at ... mm LC (LSP) | | | | | | | D | G | H1/H2 | ISO | V | CoG (ESP) at L=2000 mm | Weight at L=2000 mm | Additional weight per 100 mm add. length | Price up to length 2000 mm | Surcharge per 100 mm add. length |
|------------------|-------------------------------------|------|------|------|------|------|------|-----|-----|----------------------|-----|-----|------------------------|---------------------|--|----------------------------|----------------------------------|
| | 500 | 1000 | 1250 | 1500 | 1750 | 2000 | 2500 | | | | | | | | | | |
| S 2 - TD 010- 50 | 500 | 250 | 200 | 165 | 140 | 125 | 100 | 50 | 350 | 170/250 | 2 | 60 | 405 | 80 | 1,5 | | |
| S 2 - TD 015- 55 | 700 | 350 | 280 | 230 | 200 | 175 | 140 | 55 | 350 | 170/250 | 2 | 60 | 450 | 85 | 1,9 | | |
| S 2 - TD 020- 60 | 950 | 475 | 380 | 315 | 270 | 235 | 190 | 60 | 350 | 170/250 | 2 | 60 | 495 | 95 | 2,2 | | |
| S 2 - TD 025- 65 | 1250 | 625 | 500 | 415 | 355 | 310 | 250 | 65 | 350 | 170/250 | 2 | 65 | 505 | 110 | 2,6 | | |
| S 2 - TD 030- 70 | 1500 | 750 | 600 | 500 | 425 | 375 | 300 | 70 | 350 | 170/250 | 2 | 65 | 540 | 115 | 3,0 | | |
| S 2 - TD 040- 75 | 1900 | 950 | 760 | 630 | 540 | 475 | 380 | 75 | 350 | 170/250 | 2 | 65 | 570 | 125 | 3,5 | | |
| S 2 - TD 050- 80 | 2400 | 1200 | 960 | 800 | 680 | 600 | 500 | 80 | 400 | 170/250 | 2 | 80 | 525 | 160 | 3,9 | | |
| S 2 - TD 055- 85 | 2750 | 1375 | 1100 | 915 | 785 | 685 | 550 | 85 | 400 | 170/250 | 2 | 80 | 550 | 170 | 4,5 | | |
| S 2 - TD 060- 90 | 3000 | 1500 | 1200 | 1000 | 855 | 750 | 600 | 90 | 400 | 170/300 ¹ | 2/3 | 85 | 515 | 205 | 5,0 | | |
| S 2 - TD 070- 95 | 3600 | 1800 | 1440 | 1200 | 1030 | 900 | 720 | 95 | 400 | 170/300 ¹ | 2/3 | 85 | 540 | 215 | 5,6 | | |
| S 2 - TD 085-100 | 4200 | 2100 | 1680 | 1400 | 1200 | 1050 | 840 | 100 | 400 | 170/300 | 3 | 95 | 530 | 245 | 6,2 | | |
| S 2 - TD 105-110 | 5250 | 2625 | 2100 | 1750 | 1500 | 1310 | 1050 | 110 | 400 | 170/300 | 3 | 95 | 575 | 270 | 7,5 | | |
| S 2 - TD 140-120 | 7000 | 3500 | 2800 | 2350 | 2000 | 1750 | 1400 | 120 | 500 | 300/430 ² | 3/4 | 105 | 500 | 370 | 8,9 | | |

- H1 applies to ISO A / H2 applies to ISO B
- Surcharge for QD hooks for ISO 2
- Surcharge for QD hooks for ISO 3
- Surcharge for QD hooks for ISO 4

- ¹ applies to ISO 3, in the case of ISO 2 170/250
- ² applies to ISO 4, in the case of ISO 3 170/300
- Surcharge for slip-on version (please indicate max. outer diameter)
- Surcharge for the next larger mounting class

- Pole lengths exceeding 4000 on request.

Standard values for residual load capacity of lift trucks**

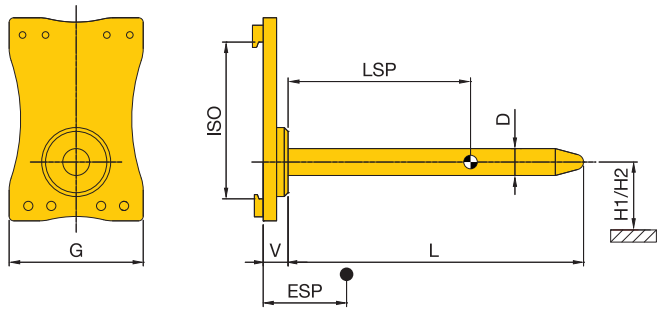
| Carpet Poles | S 2 - | TD 025 -65 | TD 030 -70 | TD 040 -75 | TD 050 -80 | TD 070 -95 | TD 085 -100 | TD 105 -110 | TD 105 -110 | TD 140 -120 | TD 140 -120 |
|--------------------------|-------|------------|------------|------------|------------|------------|-------------|-------------|-------------|-------------|-------------|
| Load capacity lift truck | kg | 1000 | 1200 | 1500 | 2000 | 2500 | 3000 | 3500 | 4000 | 4500 | 5000/500 |
| X* | mm | 300 | 350 | 350 | 450 | 450 | 450 | 500 | 500 | 500 | 500 |
| LC (LSP) = 2000 mm | kg | 290 | 370 | 465 | (600) | 870 | 1000 | 1210 | (1310) | 1550 | (1750) |
| LC (LSP) = 2500 mm | kg | 220 | 285 | 360 | (500) | 700 | 800 | 970 | (1050) | 1240 | (1400) |

** The load capacity applies to lifting heights up to 3300 mm; specifications for greater lifting heights on request.

* Assumed dimensions

- For greater load centers, where the lift truck has a higher residual load capacity than the attachment, those values, upon the exceedance of which the attachment would be overloaded, are indicated in brackets ().

Carpet Poles



Material 30CrNiMo8

| Model | Load capacity kg at ... mm LC (LSP) | | | | | | D | G | H1/H2 | ISO | V | CoG (ESP) at L=2000 mm | Weight at L=2000 mm | Additional weight per 100 mm add. length | Price up to length 2000 mm | Surcharge per 100 mm add. length | |
|------------------|-------------------------------------|------|------|------|------|------|------|-----|-------|----------------------|-----|------------------------|---------------------|--|----------------------------|----------------------------------|------|
| | 500 | 1000 | 1250 | 1500 | 1750 | 2000 | | | | | | | | | | | 2500 |
| S 2 - TD 015- 50 | 650 | 325 | 260 | 215 | 185 | 160 | 130 | 50 | 350 | 170/250 | 2 | 60 | 405 | 80 | 1,5 | | |
| S 2 - TD 020- 55 | 900 | 450 | 360 | 300 | 255 | 225 | 180 | 55 | 350 | 170/250 | 2 | 60 | 450 | 85 | 1,9 | | |
| S 2 - TD 025- 60 | 1200 | 600 | 480 | 400 | 340 | 300 | 240 | 60 | 350 | 170/250 | 2 | 60 | 495 | 95 | 2,2 | | |
| S 2 - TD 030- 65 | 1500 | 750 | 600 | 500 | 430 | 375 | 300 | 65 | 350 | 170/250 | 2 | 65 | 505 | 110 | 2,6 | | |
| S 2 - TD 040- 70 | 2000 | 1000 | 800 | 665 | 570 | 500 | 400 | 70 | 350 | 170/250 | 2 | 65 | 540 | 115 | 3,0 | | |
| S 2 - TD 050- 75 | 2450 | 1225 | 980 | 815 | 700 | 610 | 490 | 75 | 350 | 170/250 | 2 | 65 | 570 | 125 | 3,5 | | |
| S 2 - TD 060- 80 | 3000 | 1500 | 1200 | 1000 | 855 | 750 | 600 | 80 | 400 | 170/300 ¹ | 2/3 | 80 | 485 | 175 | 3,9 | | |
| S 2 - TD 070- 85 | 3600 | 1800 | 1440 | 1200 | 1025 | 900 | 720 | 85 | 400 | 170/300 ¹ | 2/3 | 80 | 510 | 185 | 4,5 | | |
| S 2 - TD 085- 90 | 4300 | 2150 | 1720 | 1435 | 1230 | 1075 | 860 | 90 | 400 | 170/300 | 3 | 85 | 515 | 205 | 5,0 | | |
| S 2 - TD 100- 95 | 5000 | 2500 | 2000 | 1665 | 1430 | 1250 | 1000 | 95 | 400 | 170/300 | 3 | 85 | 540 | 215 | 5,6 | | |
| S 2 - TD 120-100 | 5900 | 2950 | 2360 | 1965 | 1685 | 1475 | 1180 | 100 | 400 | 170/300 | 3 | 95 | 530 | 245 | 6,2 | | |
| S 2 - TD 140-110 | 7000 | 3500 | 2800 | 2330 | 2000 | 1750 | 1400 | 110 | 500 | 300/430 ² | 3/4 | 95 | 465 | 340 | 7,5 | | |
| S 2 - TD 180-120 | 9000 | 4500 | 3600 | 3000 | 2570 | 2250 | 1800 | 120 | 500 | 300/430 | 4 | 105 | 500 | 370 | 8,9 | | |

- H1 applies to ISO A / H2 applies to ISO B
- Surcharge for QD hooks for ISO 2
- Surcharge for QD hooks for ISO 3
- Surcharge for QD hooks for ISO 4

- ¹ applies to ISO 3, in the case of ISO 2 170/250
- ² applies to ISO 4, in the case of ISO 3 170/300
- Surcharge for slip-on version (please indicate max. outer diameter)
- Surcharge for the next larger mounting class

- Pole lengths exceeding 4000 on request.

Standard values for residual load capacity of lift trucks**

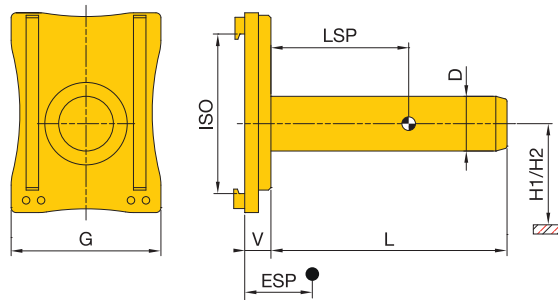
| Carpet Poles | S 2 - | TD 025 -60 | TD 030 -65 | TD 040 -70 | TD 060 -80 | TD 070 -85 | TD 085 -90 | TD 120 -100 | TD 120 -100 | TD 140 -110 | TD 140 -110 | TD 180 -120 |
|--------------------------|-------|------------|------------|------------|------------|------------|------------|-------------|-------------|-------------|-------------|-------------|
| Load capacity lift truck | kg | 1000 | 1200 | 1500 | 2000 | 2500 | 3000 | 3500 | 4000 | 4500 | 5000/500 | 5000 |
| X* | mm | 300 | 350 | 350 | 450 | 450 | 450 | 500 | 500 | 500 | 500 | 560 |
| LC (LSP) = 2000 mm | kg | 300 | 375 | 475 | 680 | 870 | (1075) | 1320 | (1475) | 1610 | (1750) | 2035 |
| LC (LSP) = 2500 mm | kg | 230 | 295 | 375 | 540 | 700 | (860) | 1100 | (1180) | 1300 | (1400) | 1650 |

** The load capacity applies to lifting heights up to 3300 mm; specifications for greater lifting heights on request.

* Assumed dimensions

- For greater load centers, where the lift truck has a higher residual load capacity than the attachment, those values, upon the exceedance of which the attachment would be overloaded, are indicated in brackets ().

Coil Booms



| Model | Load capacity kg at ... mm LC (LSP) | | | | | D mm | L mm | G mm | H1/H2 mm | ISO | V mm | CoG (ESP) mm | Weight kg | Additional weight per 100 mm add. length kg | Price | Surcharge per 100 mm add. length |
|-------------|-------------------------------------|-------|-------|------|------|---------|---------|---------|-------------|-----|---------|--------------------|--------------|--|-------|----------------------------------|
| | 500 | 600 | 800 | 1000 | 1200 | | | | | | | | | | | |
| S 2 - D 15 | 1500 | 1300 | 1050 | 900 | 750 | 115 | 1000 | 450 | 190/265 | 2 | 60 | 160 | 95 | 2,1 | | |
| S 2 - D 25 | 2500 | 2200 | 1850 | 1550 | 1350 | 155 | 1000 | 450 | 190/265 | 2 | 65 | 205 | 115 | 3,2 | | |
| S 2 - D 30 | 3000 | 2600 | 2150 | 1850 | 1600 | 155 | 1000 | 450 | 190/320 | 3 | 75 | 190 | 140 | 3,6 | | |
| S 2 - D 40 | 4000 | 3500 | 2950 | 2550 | 2200 | 180 | 1000 | 500 | 220/350 | 3 | 80 | 200 | 170 | 4,2 | | |
| S 2 - D 48 | | 5000 | 4100 | 3550 | 3100 | 195 | 1000 | 600 | 220/350 | 3 | 95 | 235 | 240 | 6,3 | | |
| S 2 - D 50 | | 5000 | 4100 | 3550 | 3100 | 195 | 1000 | 600 | 295/420 | 4 | 95 | 215 | 295 | 6,3 | | |
| S 2 - D 60 | | 6000 | 4850 | 4200 | 3700 | 220 | 1000 | 600 | 295/420 | 4 | 105 | 235 | 330 | 6,5 | | |
| S 2 - D 70 | | 7000 | 5800 | 5100 | 4500 | 220 | 1000 | 600 | 295/420 | 4 | 105 | 245 | 340 | 7,2 | | |
| S 2 - D 80 | | 8000 | 6600 | 5800 | 5100 | 220 | 1000 | 800 | 380 | 4 | 105 | 220 | 420 | 8,1 | | |
| S 2 - D 100 | | 10000 | 8350 | 7400 | 6600 | 245 | 1000 | 800 | 405 | 4 | 120 | 235 | 480 | 9,1 | | |
| S 2 - D 120 | | 12000 | 10050 | 8900 | 8000 | 245 | 1000 | 800 | 405 | 4 | 120 | 255 | 510 | 11,1 | | |

- H1 applies to ISO A / H2 applies to ISO B
- Surcharge for QD hooks for ISO 2
- Surcharge for QD hooks for ISO 3
- Surcharge for QD hooks for ISO 4
- Higher load capacities on request.

- Surcharge for integral design, see page 209
- Surcharge for slip-on version on request.
- Surcharge for protective modules on request.

Standard values for residual load capacity of lift trucks**

| Coil Boom | S 2 - | D 15 | D 25 | D 25 | D 30 | D 40 | D 40 | D 48/50 | D 60 | D 70 | D 80 | D 100 | D 120 |
|--------------------------|-------|------|------|------|------|------|------|---------|------|------|------|-------|-------|
| Load capacity lift truck | kg | 1500 | 2000 | 2500 | 3000 | 3500 | 4000 | 5000 | 6000 | 7000 | 8000 | 10000 | 12000 |
| X* | mm | 350 | 450 | 450 | 450 | 500 | 500 | 560 | 560 | 650 | 650 | 750 | 800 |
| LC (LSP) = 500 mm | kg | 1460 | 1960 | 2450 | 2900 | 3390 | 3880 | | | | | | |
| LC (LSP) = 600 mm | kg | 1300 | 1760 | 2210 | 2620 | 3070 | 3520 | 4830 | 5730 | 6800 | 7730 | 9640 | 11560 |
| LC (LSP) = 800 mm | kg | 1060 | 1460 | 1840 | 2190 | 2580 | 2960 | 4100 | 4870 | 5840 | 6640 | 8380 | 10090 |
| LC (LSP) = 1000 mm | kg | 890 | 1240 | 1570 | 1870 | 2220 | 2550 | 3540 | 4220 | 5100 | 5800 | 7390 | 8930 |
| LC (LSP) = 1200 mm | kg | | | | | | | 3110 | 3710 | 4510 | 5130 | 6600 | 7990 |
| LC (LSP) = 1500 mm | kg | | | | | | | 2600 | 3120 | 3820 | 4350 | 5650 | 6870 |

** The load capacity applies to lifting heights up to 3300 mm; specifications for greater lifting heights on request.

* Assumed dimensions

Special Products



Four-boom hydraulic positioner



Single booms for fork positioners



Coil booms with Terminal-West mounting



Hydraulically telescopic boom



Slip-on carpet pole



Square boom with separate sideshift